

# Immigrant Serving Agencies

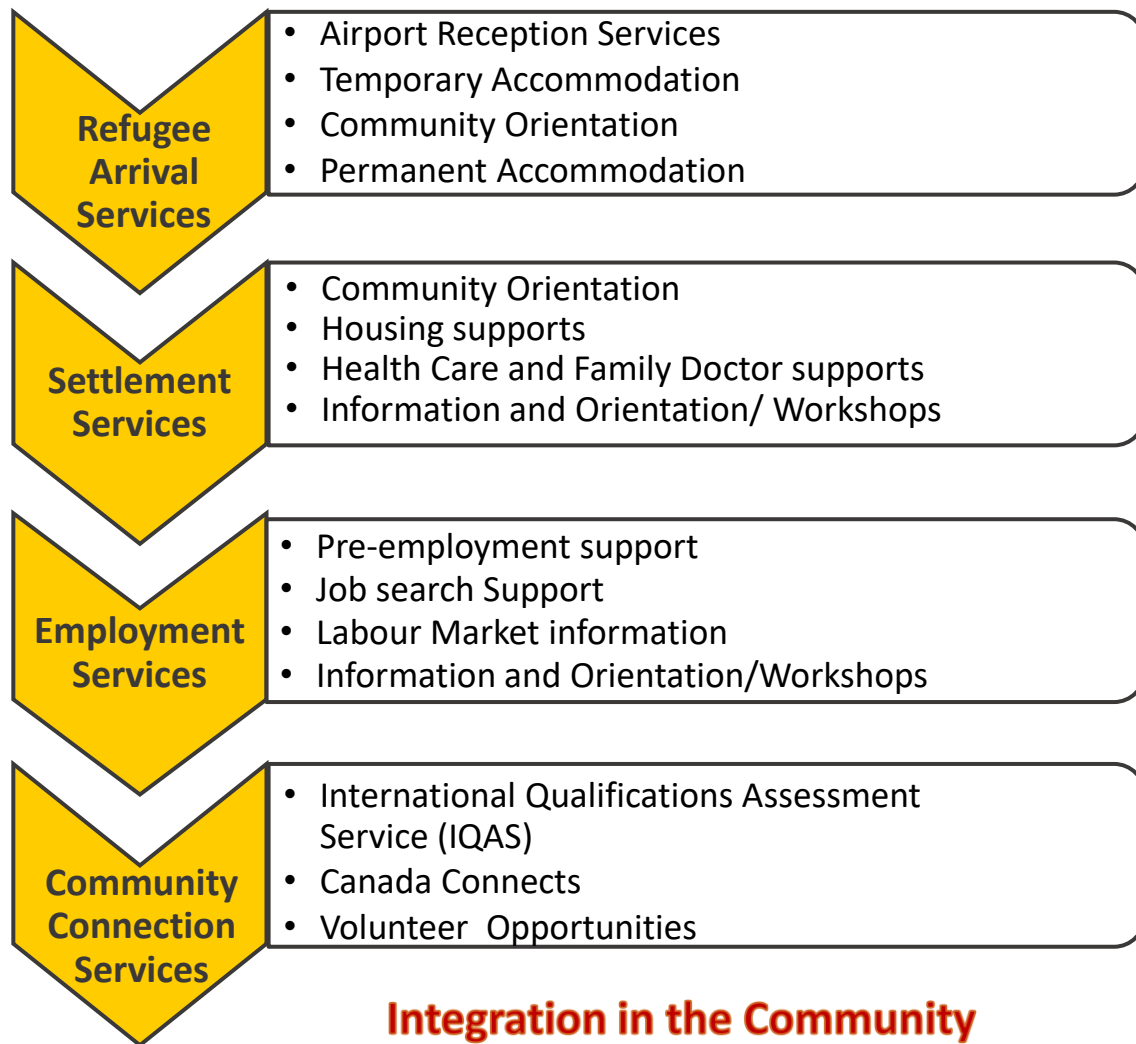
funded by IRCC  
in the Brooks Newell Region



Immigration, Refugees  
and Citizenship Canada

Immigration, Réfugiés  
et Citoyenneté Canada

## Arrival to Community



## Integration in the Community





# Non IRCC Funded Programs

## Refugee Claimants

- Support in the claim process
- Settlement Services
- Employment Services

## Temporary Foreign Workers & Spouses

- Settlement Services
- Pathways to Permanent Residency
- Information and Orientation
- Advocacy

## Permanent Residents

- BCIS's Mentorship Program

## Naturalized Citizens

- BCIS's Mentorship Program
- Settlement Services
- Employment Services

# Brooks Language Assessment and Referrals Centre

## IRCC Funded Programs



Operated by Calgary's Language Assessment & Referral Centre (CLARC)

### Language Assessments offered in Brooks:

- ✓ Canadian Language Benchmarks Placement Test (CLBPT)
- ✓ Canadian Language Benchmarks Literacy Placement Test (CLB-LPT)
- ✓ We currently offer assessments on Friday afternoons and Saturday mornings - 4 spots on each day for a total of 8/week. We have and will continue to adjust the number of spots available to clients, depending on demand.

### LINC Referrals in Brooks

- ✓ CLB PB - 4 referrals are sent to Brooks Community Adult Learning Council (BCALC)
- ✓ CLB 5 - 8 are sent to the Medicine Hat College Brooks Campus



# Brooks Language Assessment and Referrals Centre

## Non IRCC Funded Programs



### Other tests used for non-LINC purposes:

- ✓ Canadian Language Benchmarks Assessment (CLBA)
- ✓ Enhanced Language Training Placement Assessment (ELTPA)

**Education Counselling is a session that helps clients to identify and choose the right language training and career program.**

An Education Counselling involves two main components:

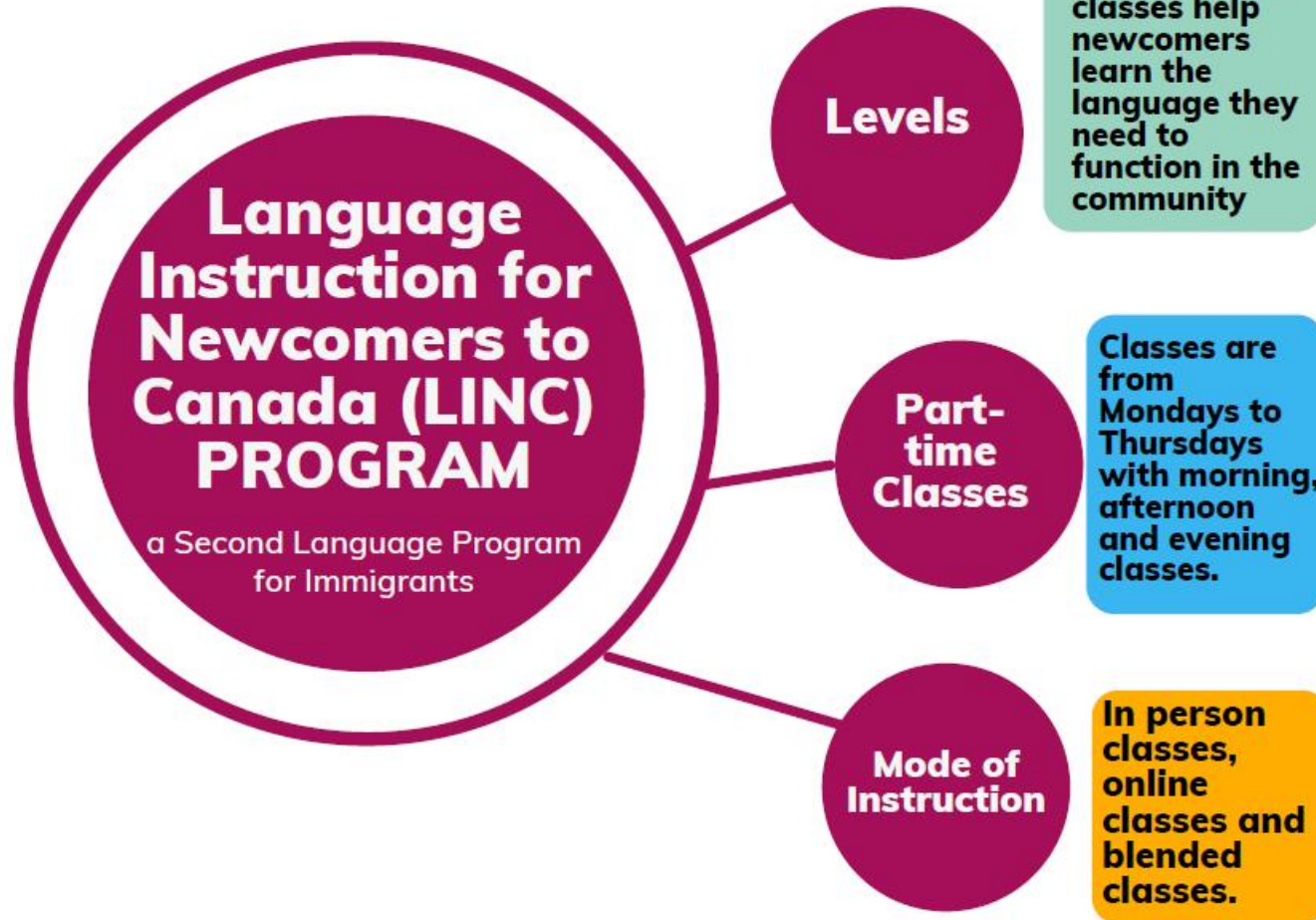
- ✓ Exploring the client's prior education, professional/occupational history, skills, abilities, interests, and needs
- ✓ Setting up realistic career goals and creating an action plan that we call the Learner Pathway Plan (LPP)





# Brooks Community Adult Learning Council

*...Learning for a better future*



CLB Level 1-4 classes help newcomers learn the language they need to function in the community



Classes are from Mondays to Thursdays with morning, afternoon and evening classes.



In person classes, online classes and blended classes.



**IRCC Funded Programs**



# Non IRCC Funded Programs

## OTHER BCALC PROGRAMS

### ELL CLASSES



ELL online or in-person courses for students who want to improve their English in Listening, Speaking, Reading and Writing

### MATH ESSENTIALS



Develop a good understanding of basic Math concepts and skills

### CELPIP TEST CENTER



Now offering computer-delivered CELPIP tests for immigration and professional designation

### TECHNOLOGY COURSES



Be computer savvy and enroll in our beginner, intermediate and advanced computer courses

### ESSENTIAL SKILLS IN THE WORKPLACE



Custom courses focusing on developing and understanding skills specific to your industry

## Medicine Hat College

Medicine Hat College is dedicated to growing a vibrant future with learners and our region. Proudly serving the communities of southeastern Alberta while welcoming learners from around the globe, Medicine Hat College offers more than 40 certificate, diploma, degree, trades, and university studies programs. We meet learners where they're at and prepare them for success in college, in the workforce, and in life.

[Contact us here:](#)

<https://www.mhc.ab.ca/request-information>





# IRCC Funded Programs

## MHC Brooks Campus LINC

Morning and Evening Classes  
CLB levels 5-8

Classes are government-funded.

- 1) You must be 18 years old or older, OR you must have completed high school in Canada.
- 2) You must have a Unique Client Identifier number from the government. This is also called a Permanent Resident Number or PR#.

Contact us at: 403-362-1692 or [MHCBrooksLINC@mhc.ab.ca](mailto:MHCBrooksLINC@mhc.ab.ca)



# IRCC Funded Programs

## NFLW

### **Newcomer Family Liaison Workers (NFLW)**

- Group programs and activities to encourage integration for women and families
- One-on-one information and advocacy services available
- Community connections through engaging life skills sessions

## SWIS

### **Settlement Worker in Schools (SWIS)**

Services for students and families from Kindergarten to Grade 12 in both Grasslands and Christ the Redeemer Schools to support a smooth transition to the Canadian School System.

- School registration, information and orientation
- Case management including emotional support, advocacy, and referrals

## HIPPY

### **Home Instruction for Parents of Preschool Youngsters (HIPPY)**

Home Visitation Program that works with mothers of preschoolers (3-5yrs) to enhance their English skills, provide community integration and help prepare their children for school.

The program focuses on 5 learning areas: Literacy, Language, Science, Motor, and Math.

# Non IRCC Funded Programs

## SPEC Hub

The SPEC Hub, part of the Brooks and Area Family Resource Network (FRN), is for families who have children (0-18yrs) to access information, referral and service coordination. Program and services support child safety, well-being, child/youth development and strengthen parenting and caregiver knowledge.

## Youth

SPEC Youth programs offer learning opportunities for children and youth (7-17 yrs) that provide engaging and safe activities along with life skill development, with the goal of increasing healthy and supportive relationships with family members, peers, and the community.

## Community Services

Direct client service to adults, age 18+, who may be facing barriers in accessing existing community and/or government resources.

## FASD Support

Prevention education and support for individuals who may have been impacted by Fetal Alcohol Spectrum Disorders (FASD)

# IRCC Funded Program

To provide accessible settlement services and support to all children and youth coming from immigrant, refugee, Temporary Foreign Worker families.



To enhance the integration of newcomer children and youth into the Brooks community by providing the following programming:

1. Community connections: volunteering
2. Afterschool program: Homework club, reading, writing, presentations, discussion forums, conversation circle, etc.
3. Mentorship program: Youth helping children.
4. Summer program: English, Math, French and Social courses, discover Canada (trips to different cities and sites), volunteering in the community, soccer tournament and much more.
5. English language skills development: English course for newcomers children and youth.
6. Sports and Recreation activities.
7. Special events: Clients are involved in different events in our community.



**AFB provide free transportation and snacks for participants!**

# Non IRCC Funded Program



Facilitate access to French services and ensure sustainability of French language and culture in Brooks

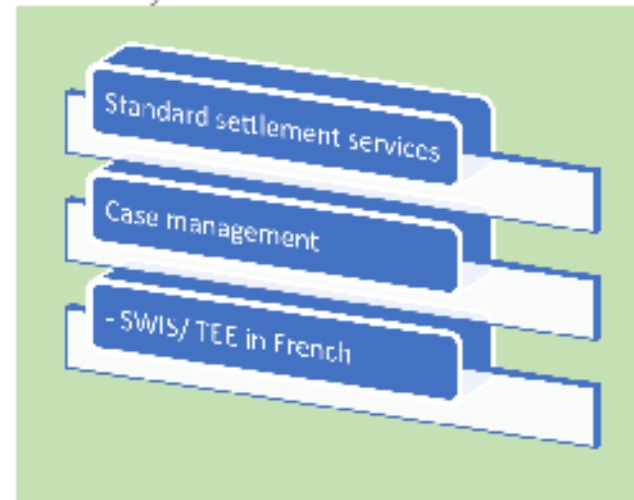
- Services en Français - French services
- Programme de lutte contre le racisme - Antiracism Program
- Franco Festival
- Mois de l'Histoire des Noirs - Black History Month



## BROOKS

### IRCC FUNDED PROGRAMS

Programs and support for Francophone newcomers during their settlement and integration process in Brooks, Alberta.



#### Standard settlement services

Help newcomers to Canada settle and integrate into their new communities. this includes :

- Needs and assets assessment and Referrals
- Information and orientation
- Community connections
- Workshops



#### Case Management

Comprehensive needs and assets assessment and settlement plan supported by coordinated referrals to settlement and community services, regular check-ins and monitoring as well as the provision of personalized and intensive supports



#### SWIS/ TEE in French school/ ecole le Ruisseau

- Help newcomers understand the Canadian education system and school culture
- Organize orientation sessions, workshops, and events for newcomers
- Support school staff and students to foster an inclusive and intercultural environment

### NON IRCC FUNDED PROGRAMS

SNI (Supporting Newcomers Integration) for Francophone refugee claimants, new Canadians & temporary workers in Brooks.

# IRCC Funded Program

## Medicine Hat College in partnership with Global Village Centre

### Capacity-Building for Enhanced Mental Health Service to Newcomers

- Established an Advisory Council – meet four times a year
- Community Engagement
- Research
  - Quantitative
  - Qualitative
- Conference – years 2,3,4 of contribution agreement
- Curriculum development
- Third Party evaluation





The agencies mentioned here have been providing services for many years to help newcomers settle, adapt, adjust, and integrate in the community they will call home. We are committed to working together to create a sense of inclusion and belonging for newcomers in the Brooks Newell Region.



# CONTACT US



## Brooks and County Immigration Services

Mohammed Idriss: Service Manager

Address: Bay 2 500 Cassils Rd. Brooks

Telephone: (403) 362-0404



## Association Francophone of Brooks

Désiré Kiana: Executive Director

Address: 707 2nd Avenue East. Brooks

Telephone: (403) 362- 0405



## Brooks Community Adult Learning Council

Michelle Gietz: Executive Director

Address: 303 - 8 Street West. Brooks

Telephone: (403) 362-5372



## Centre d'accueil pour nouveaux arrivants francophones

Karim Mennas: Program Manager

Address: 1560- 727 7 Ave SW Calgary

Telephone: (587) 391-3919



## The SPEC Association for Children and Families

Amanda Goodnough: Executive Director

Address: 101, 327 3 Street West. Brooks

Telephone: (403) 362-5056



## Brooks Language Assessment & Referral Centre

Jen Thornhill: CLARC Manager

Address: 1200- 910 7 Ave SW, Calgary

Telephone: (403) 669-6706



## Medicine Hat College (LINC)

Shalla Shaharyar: Program Manager

Address: 299 College Drive SE, Medicine Hat

Telephone: (403) 529-3875



## Medicine Hat College (with Global Village)

Elizabeth Pennfather-O'Brien: Research Coordinator

Address: 299 College Drive SE, Medicine Hat

Telephone: (403) 529-3956